

Tire-Patch

UHF RFID EPC C1 Gen2 Tag



ADVANCED ID
ASIA ENGINEERING CO.,LTD.

PASSION FOR RFID



Frequency range from 840 to 960 MHz



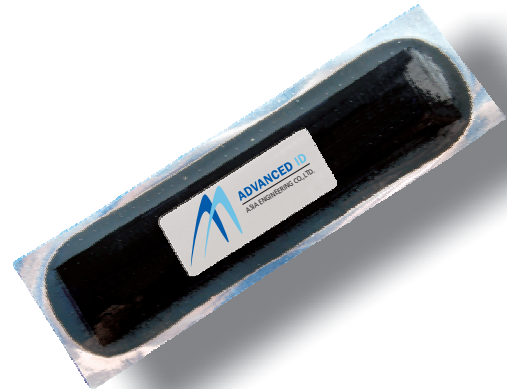
Read range up to 0,6 m (with Advanced ID's Reader PR-510)



Operating temperature from -40 to +85 °C



Best for use in tires for trucks, cars or motorbikes for tire management such as asset tracking etc.



TECHNICAL SPECIFICATIONS

RFID chip

Manufacturer:	NXP
Protocols:	EPC C1 Gen 2
Read range:	up to 0,6 m (with Advanced ID's Reader PR-510)
Frequency range:	840 to 960 MHz
Polarization:	linear

Memory organization

EPC:	240 Bit
Tag ID:	64 Bit
User Memory:	512 Bit
Access password:	32 Bit
Kill password:	32 Bit

Physical dimensions

Operating temperature:	-40 to +85 °C Threshold region: -40 to +110 °C, up to 8 hrs. 110-125 °C at a max. pressure of 413 kPa
Dimensions:	108(L) x 30 (W) x 1 (H) mm
Color:	black
Assembly:	to be applied on the tire in the same way as a tire repair patch preferably inside (outside possible), best position may vary depending on each tire type