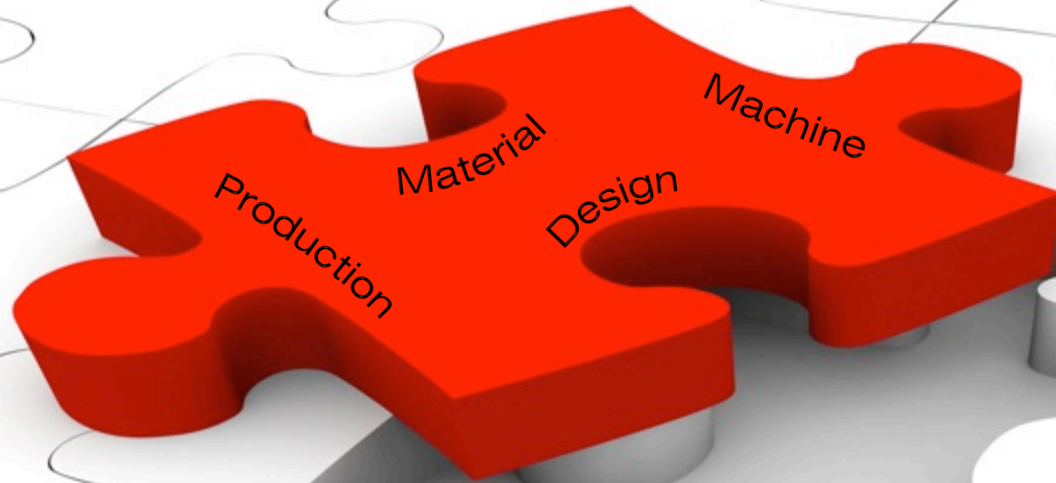




ADVANCED ID

ASIA ENGINEERING CO.,LTD.

ELECTRONIC PRODUCTS & MANUFACTURING



Macromelt® Technology



Overview

- Macromelt® Molding is a low Pressure molding process by using hot melt adhesives to achieve superior sealing and protection of electrical and electronic components.
- Macromelt® superior technology offers higher productivity compared to those widely used in current sealing processes such as the 2-component casting ,potting resins or silicones.
- This process is environmental-friendly , has little material waste and contributes to total cost reduction through significant improvements in productivity.
- Macromelt® is polyamide created from renewable sources such as soy and rape seeds.





Application Samples



- Encapsulated sensor is protected from harsh environment and provides strain relief and fixings.



- The insulation properties of low pressure polyamide make it suitable for high voltage applications. Sometimes protecting IP is also important: encapsulation can help.



- Mechanical and electrical protection of small wiring assemblies is fast and simple



- The mould incorporates an external cavity, more costly to create with other materials. Strain relief, protection, reliability, aesthetic appeal, shape and cost reduction come together in this component.



- USB memory stick is given extra appeal by over-moulding an attractive shape and colour. Identity marks are added to the mould.



In house Design



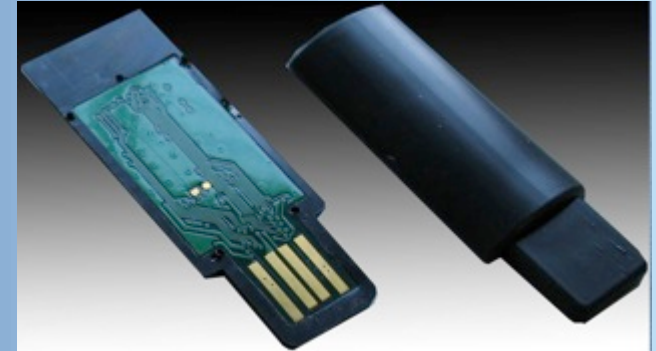
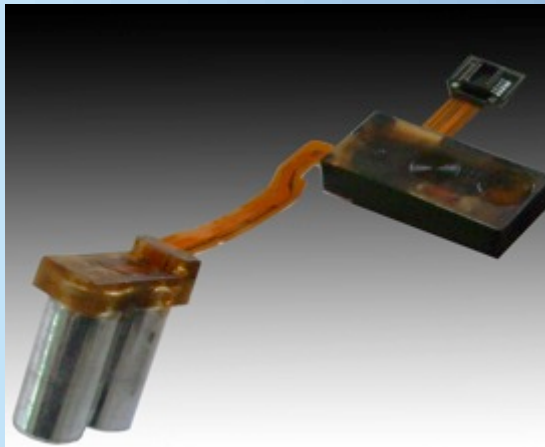
Hall Sensor
Flash Unit



Reflection Sensor
Temperature Sensor

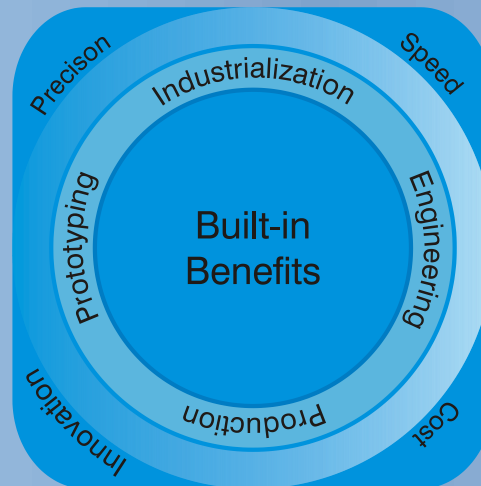
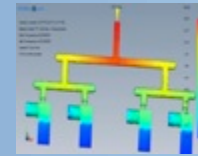


RFID Tag
USB Dongle





From Design to Product



Customer



Machine Technology



Technical Specification SINGLE:

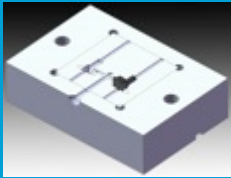
Tooling Height	130 mm
Strokeheight	125 mm
Nozzle Height	50-70mm (default 66mm)
Clamppressure	4 kN
Clampingsystem	pneumatic
Airpressure Supply	0.6 MPa/6 bar
Pressure System	pneumatic
Melting Tank	6 litres
Power consumption:	2/3/N/PE AC 220/380 V/50 Hz
Power Usage :	2-4 kW
Program storage	30
Pump Pressure setting	1-40 bar (adjustable)
Fast Injection Time	0-20s (adjustable)
Slow Injection Time	0-40s (adjustable)
Cooling Time	0-100s (adjustable)

Additional features with TWIN:

- **Throughput increase:** >50%
- **Efficiency improvement**
- **One melting tank only**
- **Two different molds run at the same time**
- **Can be added later**
- **Operated by single person**
- **Two different products can be injected with independent settings**



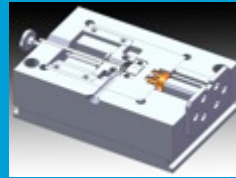
Mold Technology



Simple cavity



Multiple cavity



Complicated mold



Changable cavity



Prototype mold



Production mold

All made inhouse





ADVANCED ID

ASIA ENGINEERING CO.,LTD.

ELECTRONIC PRODUCTS & MANUFACTURING

Global Presence



ADVANCED ID ASIA EUROPE DIVISION
Auf Bösselhagen 14
D-31515 Wunstorf • Germany
Phone: +49 5031 - 912948
Fax: +49 5031 - 912918

ADVANCED ID ASIA ENGINEERING CO., LTD
116 Moo 3 T. Maekhue A. DoiSaket
Chiang Mai 50220 • Thailand
Phone: +66 53387316-7
Fax: +66 53387319